

Avision A+ Manager

- The Client-Server Software
Application

User's Guide

Avision Inc.

Table of Contents

1. Overview	3
1.1. Introduction	3
1.2. Features.....	3
2. Using A+ Manager	5
2.1. Logging A+ Manager	5
2.2. Monitoring All Devices.....	6
2.2.1. Monitoring all Device's status	6
2.2.2. Viewing Device's Configurations	7
2.2.3. Viewing the Event Log.....	8
2.2.4. Viewing the Statistical Information.....	9
2.3. Checking New Updates	10
2.3.1. Updating Devices Automatically	10
2.3.2. Updating Devices Manually	10
2.3.3. Creating New Updates	11
2.4. Checking Security Status	11
2.5. Visualizing All Data.....	12
3. Customizing A+ Manager	14
3.1. Opening The [Settings] Page	14
3.2. The Server Function Settings.....	15
3.3. The E-Mail Settings.....	15
3.4. The Maintenance Notification Settings.....	16
3.5. The Security Checking	17
3.6. The Event Log Settings.....	18
3.7. The Proxy Settings.....	18
3.8. The Replacement Parts Life Settings.....	18
3.9. The Energy Saving Control	19
4. Using the e-Mail Alert	20
4.1. Presetting SMTP Server	20

1. Overview

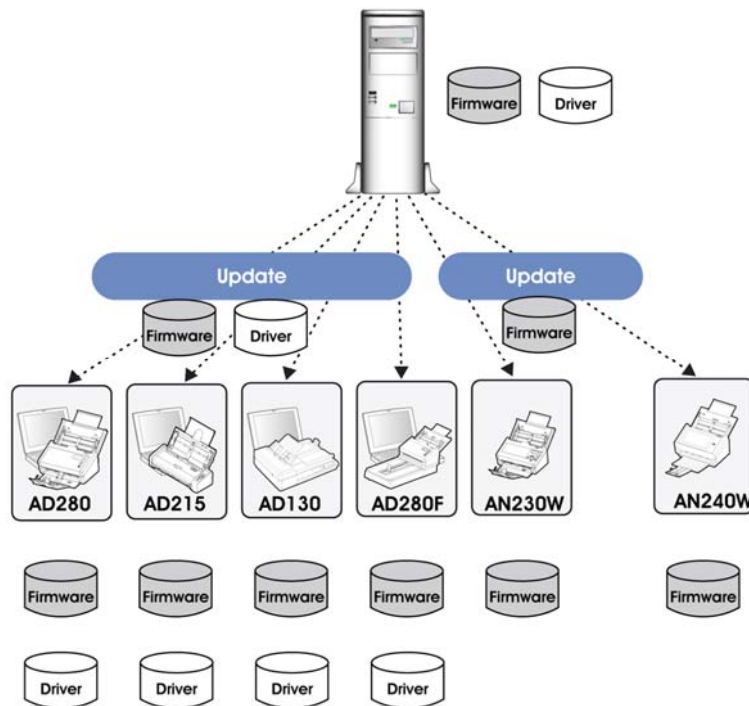
1.1. Introduction

A+ Manager is a server-client software that makes it easy for administrator to monitor and manage multiple scanners over a network from a desktop. A+ Manager boosts your scanner productivity by monitoring the scanner status, performing simultaneous driver and firmware updates, and alerting the administrator an error or when a consumable part needs a replacement.

1.2. Features

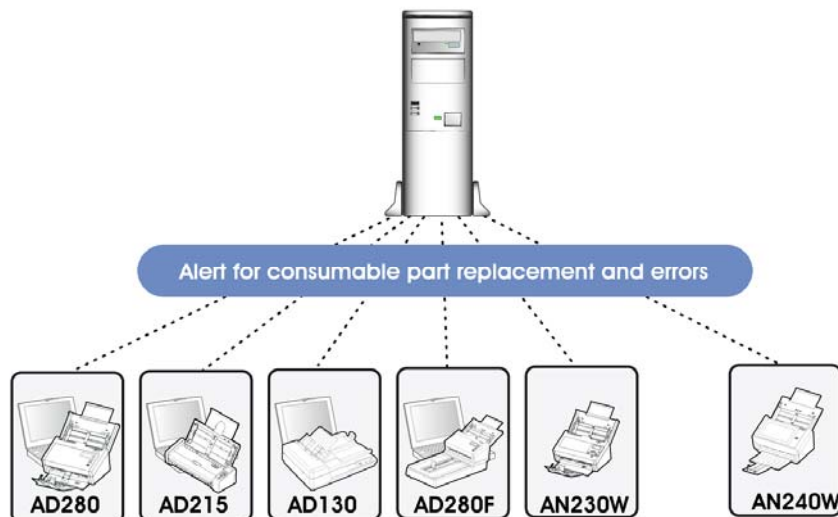
Efficiently updating all devices in the network

There is no need to update scanner one by one. With Avison's A+ Manager, you can simultaneously download the latest driver, firmware, bundled software updates to a large number of scanners in a short time.



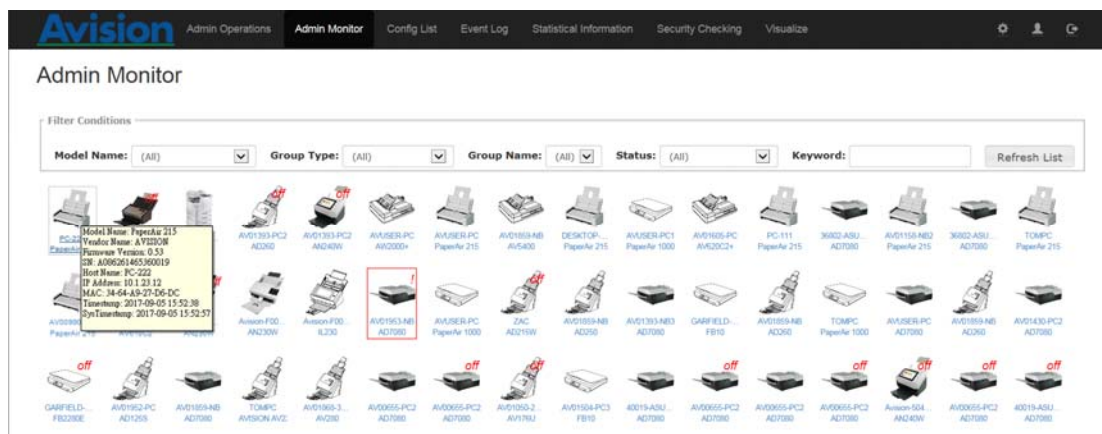
Easily monitoring all devices in the network

You can monitor the operating status of scanners in real time to check if an error has occurs, consumable parts needs replacement, or if maintenance is needed to reduce the down time and increase the productivity.



Quickly identifying all devices in the network

You can check the scanner information including the serial number, the version number of driver and firmware, shipping date, scan count, ADF roller count. You can even sort scanners into different groups to let an individual group to be updated.

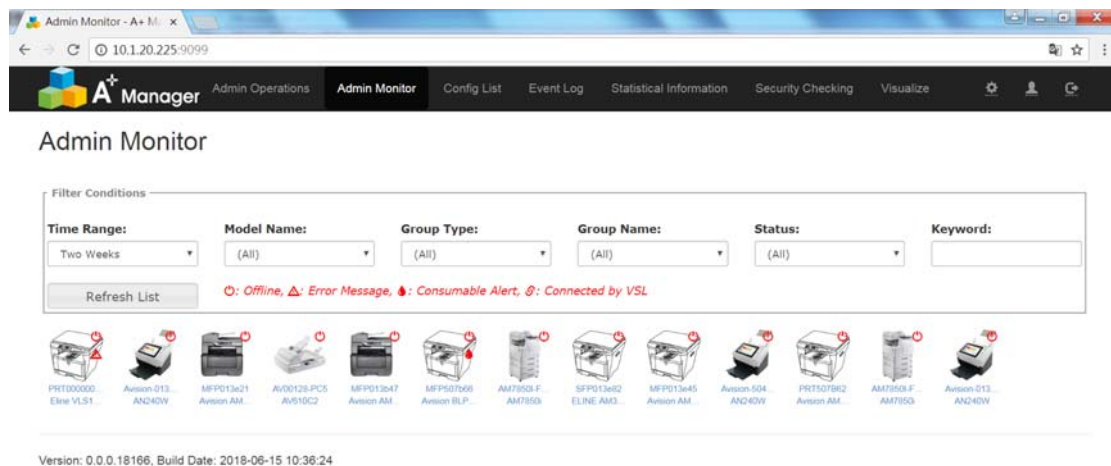



2. Using A+ Manager

2.1. Logging in A+ Manager

To access the server of the A+ Manager, you need to login first. Follow these steps to login A+ Manager:

1. Open your browser.
2. Type the IP address of the server of the A+ Manager on the URL field.
3. A login dialog box appears. Type your user name and password and then press **[Enter]**.
4. The following A+ Manager web site appears.
5. The A+ Manager web site contains a few tabs. Each tab and its functions will be described in the following section.



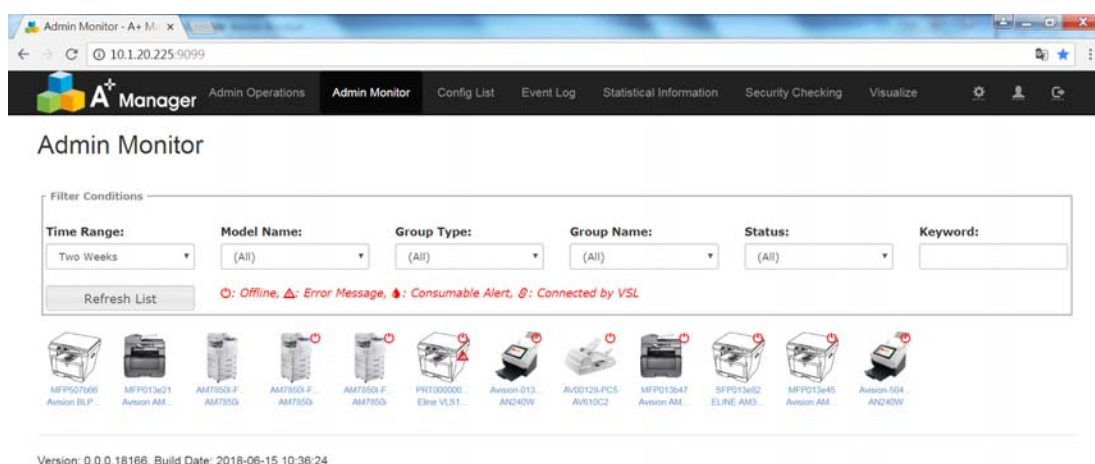
6. To change your login name or password, press **[Settings]** icon  to enter a new login name or password.

2.2. Monitoring All Devices

By monitoring all devices' status, event logs, and statistical information, the administrator can swiftly take appropriate actions to clear an error or replace a consumable part if required.

2.2.1. Monitoring all Device's status

On the A+ Manager web site, press the [**Admin Monitor**] tab. The following Admin Monitor page will be displayed.

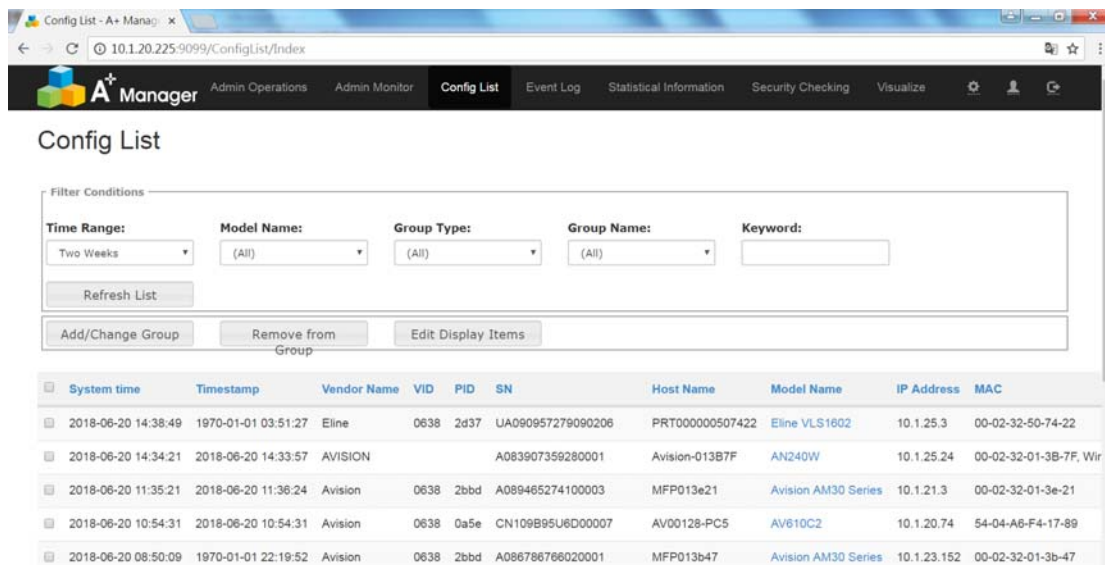


- **Filter Conditions:** Filters the devices displayed in [**Admin Monitor**] page and then press [**Refresh List**] to refresh the status with the filter condition. Choice: Time Range, Model Name, Group Type, Group Name, Status, Keyword.

Item Name	Description or Choice												
Time Range	Select the time range to be filtered within a specified period of time. Choice: Today, * Two Weeks , One Week, One Month, Two Months, Three Months, One Year, All.												
Model Name	Select the model name to be filtered.												
Group Type	Select the group type to be filtered.												
Group Name	Select the group name to be filtered.												
Status	Select the status to be filtered. Choice: All, Online, Offline, Error Message, Consumable Alert, Connected by VSL. <table border="1" data-bbox="486 1794 1369 1957"> <thead> <tr> <th>Icon</th> <th>Indicated Status</th> <th>Icon</th> <th>Indicated Status</th> </tr> </thead> <tbody> <tr> <td></td> <td>Offline</td> <td></td> <td>Consumable Alert icon</td> </tr> <tr> <td></td> <td>Error</td> <td></td> <td>Indicates the device is connected via VSL tool.</td> </tr> </tbody> </table>	Icon	Indicated Status	Icon	Indicated Status		Offline		Consumable Alert icon		Error		Indicates the device is connected via VSL tool.
Icon	Indicated Status	Icon	Indicated Status										
	Offline		Consumable Alert icon										
	Error		Indicates the device is connected via VSL tool.										
Keyword	Enter the keyword from the device information to be filtered.												

2.2.2. Viewing Device's Configurations

The [Config. List] displays configuration information for the device. The Configuration includes the following information: System Time (The server's time), Timestamp (the device time/device's computer time), Vendor Name, PID, VID, Series Number, Host Name, Model Name, IP Address, Mac Address, Pad Scan Count, Roller Count, Multi-Feed Count, Jam Count, Firmware Version, Print Count, ADF Scan Count, Flatbed Scan Count, Pad Scan Count, ADF Single Mode Scan Count, ADF Duplex Mode Scan Count, Roller Count, Multi-Feed Count, Jam Count, Reverse Roller Count, Pickup Roller Count, Print Large Page Count, Print Small Page Count, Print Large Paper Count, Print Small Page Count, Motor Error Count....



- Filter Conditions: Time Range, Model Name, Group Type, Group Name, Keyword.

Item Name	Description or Choice
Time Range	Select the time range to be filtered within a specified period of time. Choice: Today, * Two Weeks , One Week, One Month, Two Months, Three Months, One Year, All.
Model Name	Select the model name to be filtered.
Group Type	Select the group type to be filtered.
Group Name	Select the group name to be filtered.
Keyword	Enter the keyword from the device information to be filtered.

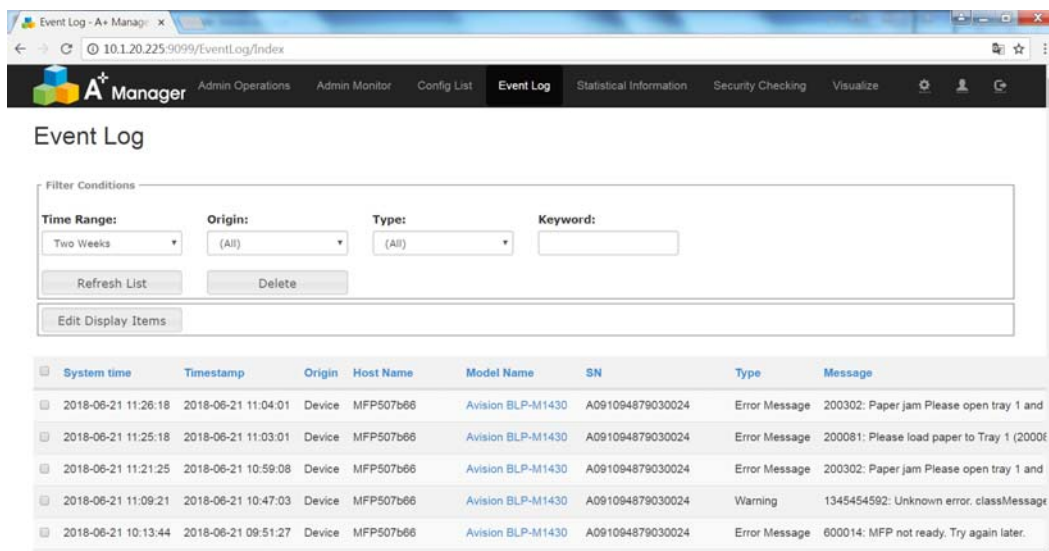
2.2.3. Viewing the Event Log

The [Event Log] page displays all the events that occur to the device.

Type

Shows the following event types:

1. Error: Shows an error which affects the application operation.
2. Warning: Shows a warning which does not affect the current application operation but may lead to a significant problem later.

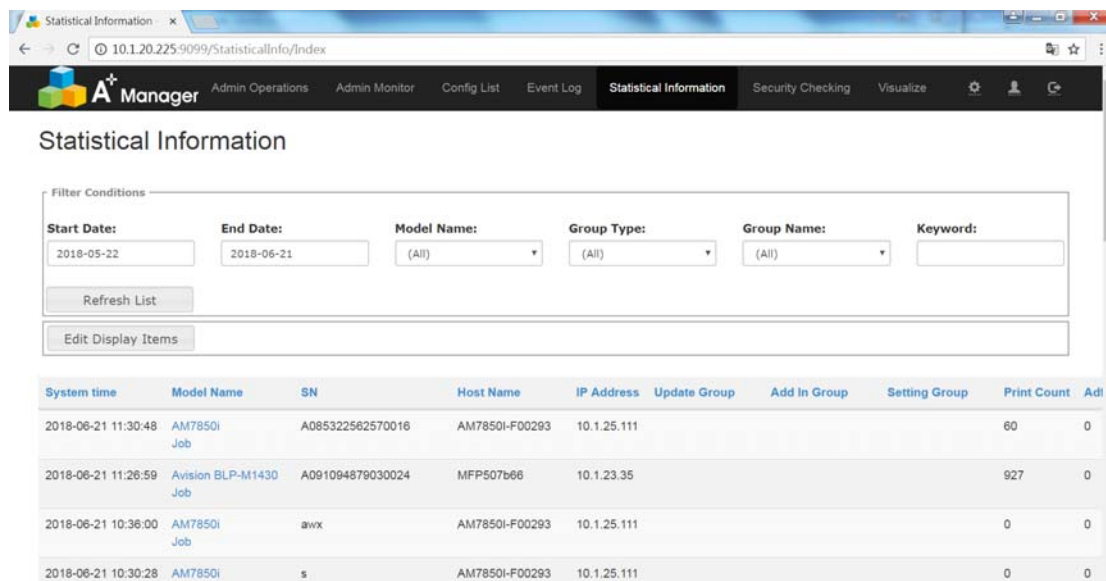


- Filter Conditions: Time Range, Original, Type, Keyword.

Item Name	Description or Choice
Time Range	Select the time range to be filtered within a specified period of time. Choice: Today, *Two Weeks , One Week, One Month, Two Months, Three Months, One Year, All.
Original	Select the original to be filtered. Choice: *All , Server, Device
Type	Select the event type to be filtered. Choice: *All , Error Message, Warning, Consumable Alert.
Keyword	Enter the keyword from the device information to be filtered.

2.2.4. Viewing the Statistical Information

The [Statistical Information] displays all collected information on the device. The information that is collected as statistical information is as follows: Print Count, ADF Scan Count, Flatbed Scan Count, Pad Scan Count, ADF Single Mode Scan Count, ADF Duplex Mode Scan Count, Roller Count, Multi-Feed Count, Jam Count, Reverse Roller Count, Pickup Roller Count, Print Large Page Count, Print Small Page Count, Print Large Paper Count, Print Small Page Count.



- Filter Conditions: Time Range, Original, Type, Keyword.

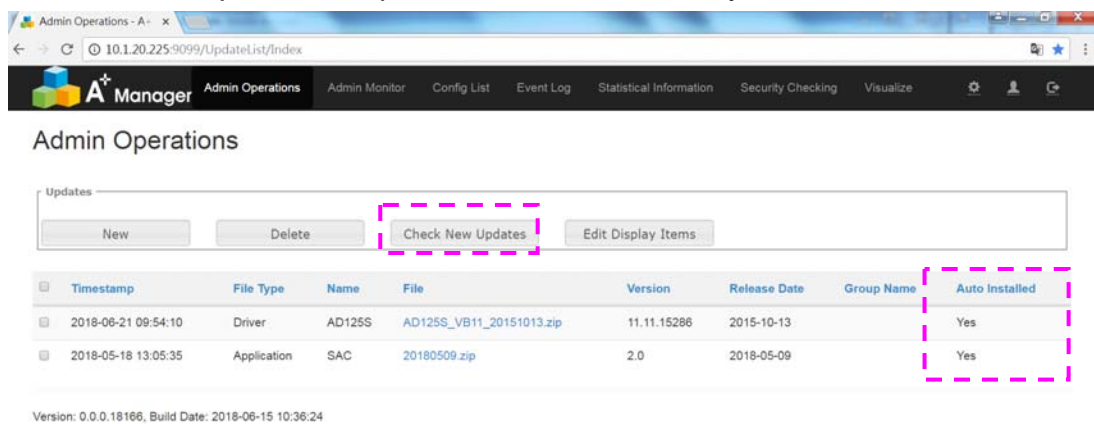
Item Name	Description or Choice
Time Range	Select the time range to be filtered within a specified period of time. Choice: Today, *Two Weeks , One Week, One Month, Two Months, Three Months, One Year, All.
Original	Select the original to be filtered. Choice: *All , Server, Device
Type	Select the event type to be filtered. Choice: *All , Error Message, Warning, Consumable Alert.
Keyword	Enter the keyword from the device information to be filtered.

2.3. Checking New Updates

By clicking the [**Check New Updates**] tab on the [**Admin Operations**] page, the A+ Manager server will connect to the company's web site to detect if there are any updates on the driver, firmware, or software. If there is a new update item, the update item will be displayed on the [**Admin Operations**] page.

2.3.1. Updating Devices Automatically

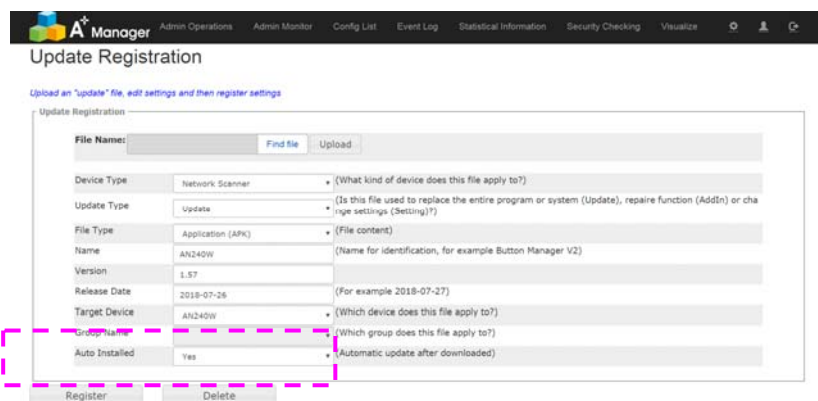
By default, the new updates are preset to be automatically installed onto the devices.



2.3.2. Updating Devices Manually

If you wish to update the devices manually, please follow these steps to register the new settings:

1. On the [**Admin Operation**] page, click the file to prompt the [**Update Registration**] page.



2. Scroll down to the last item – [**Auto Installed**] and choose [**No**] from its selection.
3. Click [**Register**] to update the settings. The updated file will not be automatically installed to the device.

2.3.3. Creating New Updates

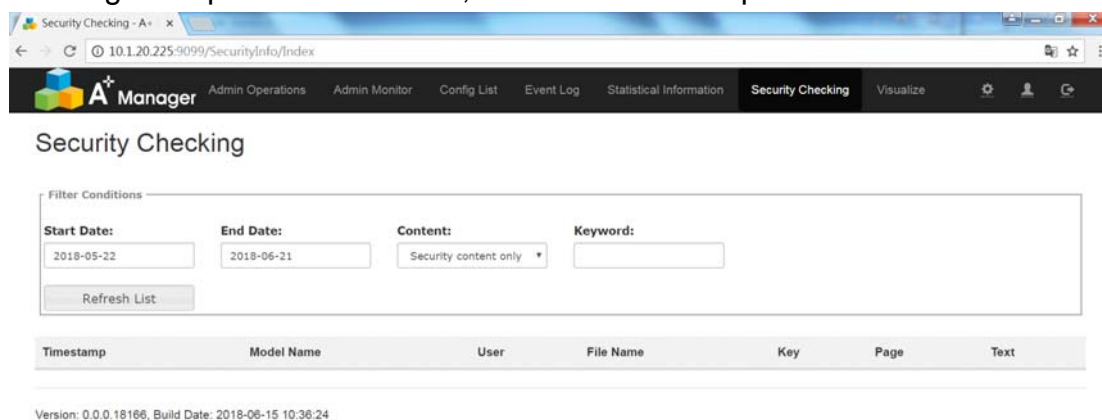
If the administrator has a new update file available on his computer, the administrator can add new update to the server and let the device to share the update.

To create a new update,

1. On the **[Admin Operations]** page, click **[New]** on the **[Updates]** option. The **[Update Registration]** page will be displayed.
2. Click **[Find File]** to browse the file from the computer.
3. Click **[Upload]** to upload the file to the A+ Manager server. The new update item will be displayed on the **[Admin Operations]** page.

2.4. Checking Security Status

This feature is used to detect the keyword for all the scanned images for each device by the text recognition process. However, this feature is an option now.



2.5. Visualizing All Data

The [Visualize] tab displays the statistical scan count information in graphics. The Visualize data includes the following items:

The Visualized Data

Item	Description
Flatbed Scan Count	Number of sheets the flatbed module has been scanned.
Jam Count	Number of paper jams occurrences
Multi-Feed Count	Number of multi-feed occurrences
Pad Scan Count	Number of sheets the ADF pad has been scanned
Pickup Roller Count	Number of sheets the Pickup Roller has been scanned
Reverse Roller Count	Number of sheets the Reverse Roller has been scanned
Roller Count	Number of sheets the ADF Roller has been scanned

- Filter Condition: Model Type, Model Name, Field, Aggregation, StartDate, EndDate

Item Name	Description
Model Type	Select the model type to be filtered. Choice: Scanner, Network Scanner, MFP
Model Name	Select the model name to be filtered.
Field	Select the field to be filtered. Choice: FlatbedScanCount, Jam Count, Multi-Feed Count, Pad Scan Count, Pickup Roller Count, Reverse Roller Count, Roller Count
Aggregation	Select the aggregation to be filtered. Choice: Avg (Average), Sum, Min, Max.
StartDate	The date to start the count the specified data.
EndDate	The date to end the count of the specified data.

Visualize - A+ Manager x
10.1.20.225:9099/Visualize/Edit

A+ Manager Admin Operations Admin Monitor Config List Event Log Statistical Information Security Checking **Visualize**

Visualize

Model Type: Scanner Network Scanner MFP

Model Name:

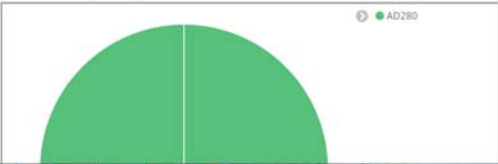
Field:

Aggregation: Avg Sum Max Min Count

StartDate:

EndDate:

Pie:



AD280

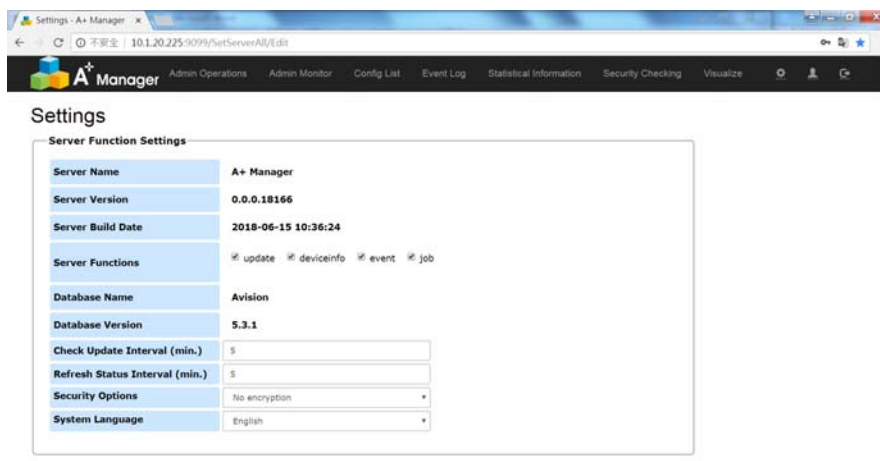
上午 11:33
2018/6/21

3. Customizing A+ Manager

This section describes how to change the configuration of the A+ Manager server to fit your own purpose. To change the server's configuration, you need to open the **[Settings]** page. Follow these steps to open the **[Settings]** page.

3.1. Opening The **[Settings]** Page

1. On the A+ Manager's main page, click the **[Settings]** icon. The **[Settings]** page will be displayed.



2. Change the server's configuration on the **[Settings]** page.

3.2. The Server Function Settings

Items to be revised on the Server Function Settings:

Item Name	Choice/Description
Server Function	Specify the functions of the A+ Manager server. Choice: Update, Deviceinfo, event, job Deviceinfo will be displayed on the [Config. List] page and Job will be displayed on the [Statistical Information] page.
Check Update Interval (min.)	Enter the interval (number of minutes) the client will ask the A+ Manager server for any update status.
Refresh Status Interval (min.)	Enter the interval (number of minutes) the server will ask all devices for their status.
Security Options	Choose your security option. Choice: No Encryption, Encrypt data before sending to server, Encrypt data between server and device
System Language	Choose the displayed language. Choice: English, Chinese Traditional, Chinese Simplified

3.3. The E-Mail Settings

Items to be revised on the E-Mail Settings:

Item Name	Choice/Description
Mail Title	Enter the subject of the e-mail.
Mail From	Enter the sender's e-mail address.
Main To	Enter the recipient's e-mail address.
SMTP Host	Enter the SMTP host name.
SMTP Port	Enter the SMTP port number.
This server requires a secure connection (SSL)	Check if the SMTP server requires a secure connection (SSL).
This server requires authentication	If the SMTP server requires authentication, check and enter the SMTP's account and password.

3.4. The Maintenance Notification Settings

Items to be revised on the Maintenance Notification Settings:

Item Name	Choice/Description
Notify by email when misfeed, multi-feed or paper jam occurrence exceeds threshold limit	Check to enable this feature.
Mail to	Enter the recipient's e-mail address to send these errors.
Depend on the number of occurrences within one day	Check to enter the specified threshold in one day. Miss-Feed Threshold: Enter your specified miss-feed threshold. Multi-Feed Threshold: Enter your specified multi-feed threshold. Paperjam Threshold: Enter your specified paperjam threshold.
Depend on the number of occurrences within throughput	Check to enter the specified occurrences within specified throughput. Miss-Feed Threshold: Enter your specified miss-feed occurrences within specified threshold. Multi-Feed Threshold: Enter your specified multi-feed occurrences within specified threshold. Paperjam Threshold: Enter your specified paperjam occurrences within specified threshold.

3.5. The Security Checking

Items to be revised on the Security Checking: (This feature is an option.)

Item Name	Choice/Description
Use keyword check and notify by email	Check to enable this feature to search keyword on the scanned documents which have undergone the text recognition process.
Automatically upload job files to the server	Check to automatically upload the scanned images to the server (to be displayed on the [Security Checking] page).
OCR language	Choose your OCR (Optical Character Recognition) language.
Keyword	Enter the keyword.
Mail To	Enter the recipient's e-mail address to send search result.

3.6. The Event Log Settings

Items to be revised on the Even to Log Settings:

Item Name	Choice/Description
Enable Event Log E-Mail Notification	Check if the administrator wishes to receive an event log by e-mail.
Mail to	Enter the administrator's email address.
Mail on	Enter the specified time of the event log. (Weekday/hour/minute)

3.7. The Proxy Settings

Items to be revised on the Proxy Settings:

Item Name	Choice/Description
Proxy Server	Choose to use [system proxy settings] or [manual proxy configuration].
Manual proxy configuration	Specify proxy IP and port number.
Authentication	If this proxy requires authentication, enter the required account name and password.

3.8. The Replacement Parts Life Settings

Items to be revised on the Replacement Parts Life Settings:

Item Name	Choice/Description
Model Name	Choose the device model to change the settings.
ADF Roller Life	If desired, specify the model's ADF Roller Lifetime.
Reverse Roller Life	If desired, specify the model's ADF Roller Lifetime.
Pickup Roller Life	If desired, specify the model's ADF Roller Lifetime.
Pad Life	If desired, specify the model's ADF Roller Lifetime.
Get Default Value	Click to show the manufacturer's default lifetime.
Save This Model	Click [Save This Model] to save the changed settings.

3.9. The Energy Saving Control

Items to be revised on the Energy Saving Control:

Item Name	Choice/Description
Model Name	Choose the device model to change the settings.
Energy Saver Time (min.)	Check and set the time after the device's last action to start the energy saver mode.
Auto Power Off Time (min.)	Check and set the time after the device's last action to automatically power off the device.

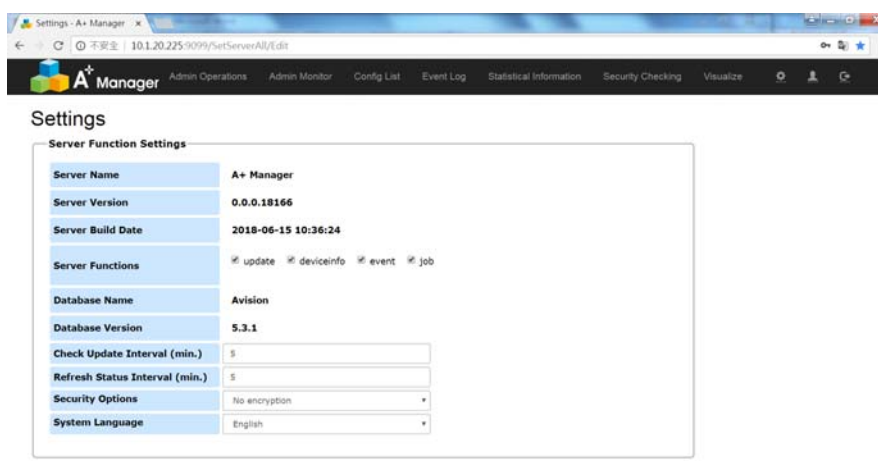
4. Using the e-Mail Alert

The system provides e-mail alert to the administrator if a consumable part needs to be replaced or an error has occurred. To preset your SMTP server, please follow these steps:

Presetting SMTP Server

4.1. Presetting SMTP Server

1. On the A+ Manager's main page, click the [**Settings**] icon. The [**Settings**] page will be displayed.



2. Specify the SMTP information on the [**E-Mail**] option. Each item will be described in the following table:

Item Name	Choice/Description
Mail Title	Enter the subject of the e-mail.
Mail From	Enter the sender's e-mail address.
Main To	Enter the recipient's e-mail address.
SMTP Host	Enter the SMTP host name.
SMTP Port	Enter the SMTP port number.
This server requires a secure connection (SSL)	Check if the SMTP server requires a secure connection (SSL).
This server requires authentication	If the SMTP server requires authentication, check and enter the SMTP's account and password.